

Okimoto-yu 2.0 Concept and Design



Floorplan-1F



Floorplan-2F



Problems

There won't be many users
It serves only one function
and has weak ties to the
local community.

The open space doesn't
feel open, lacks sunlight,
and is also quite small.

Solution

Create a more open park
to attract more visitors.

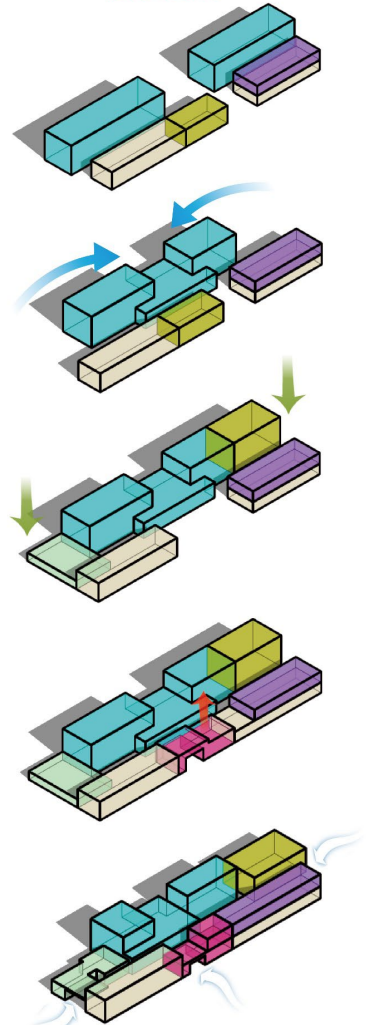
Add features like open
areas, a café, and a laundry.

The front of the bathhouse
will serve as an open
space during the day,
the second floor will be
efficiently used, focusing
on natural light and spatial
connection.



- Guesthouse
- Sento
- Cafe, etc.
- Openspace

before

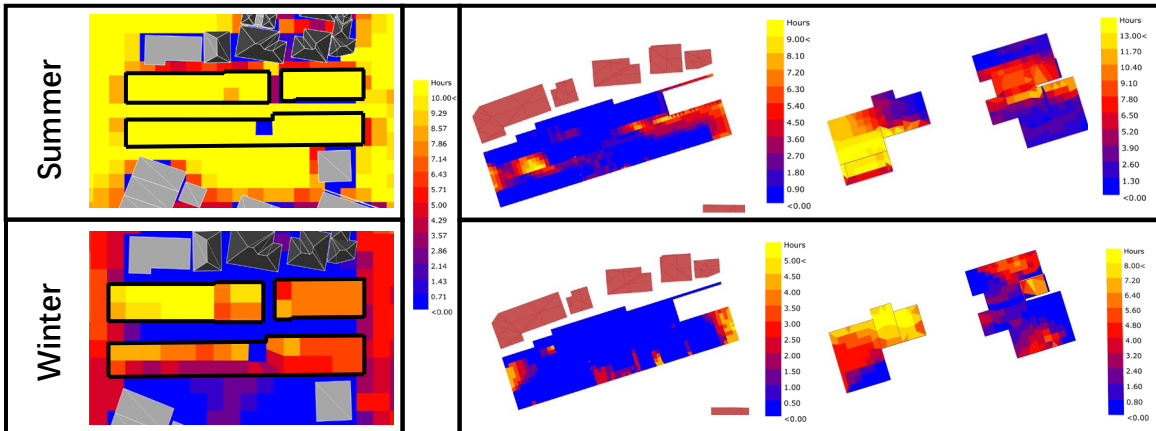


after

Sunlight duration

Before

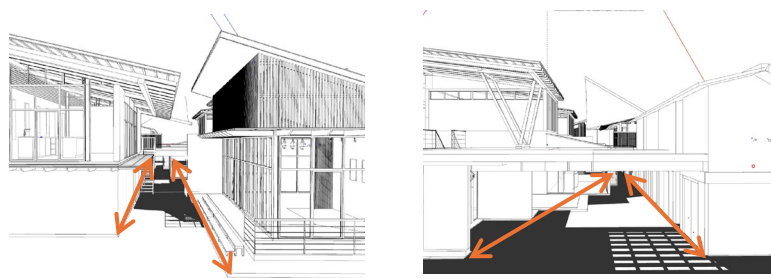
After



Improvement results

Before
In summer, almost every spot gets strong sunlight, while in winter, there is hardly any sunlight.

After
divided the open space and park areas into **staggered upper and lower levels** based on the sun's angle, ensuring **shaded areas in summer** and **sunlit areas in winter**.

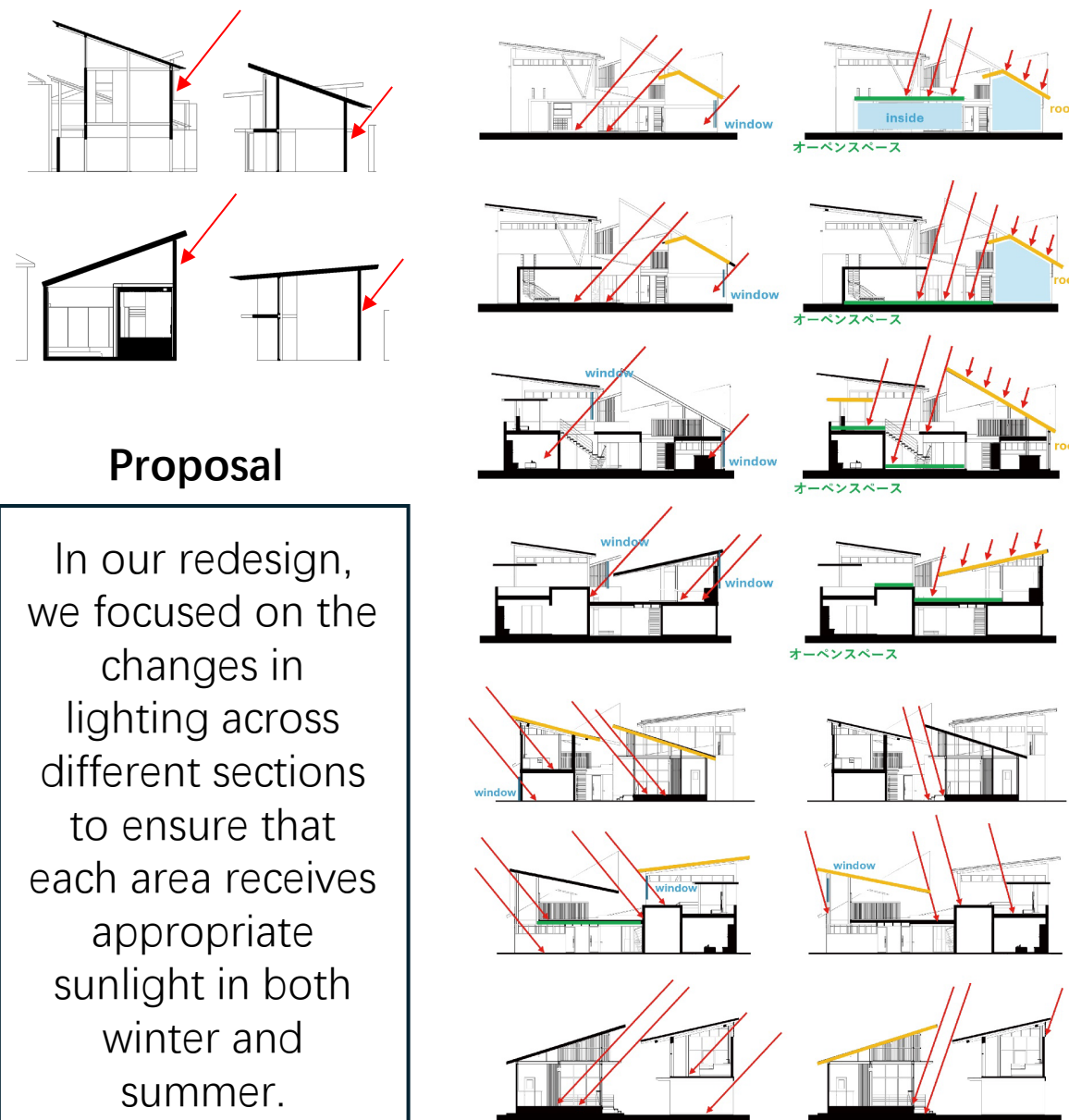


And the road is shaded during the summer solstice

The considered lighting environment for the section

Before

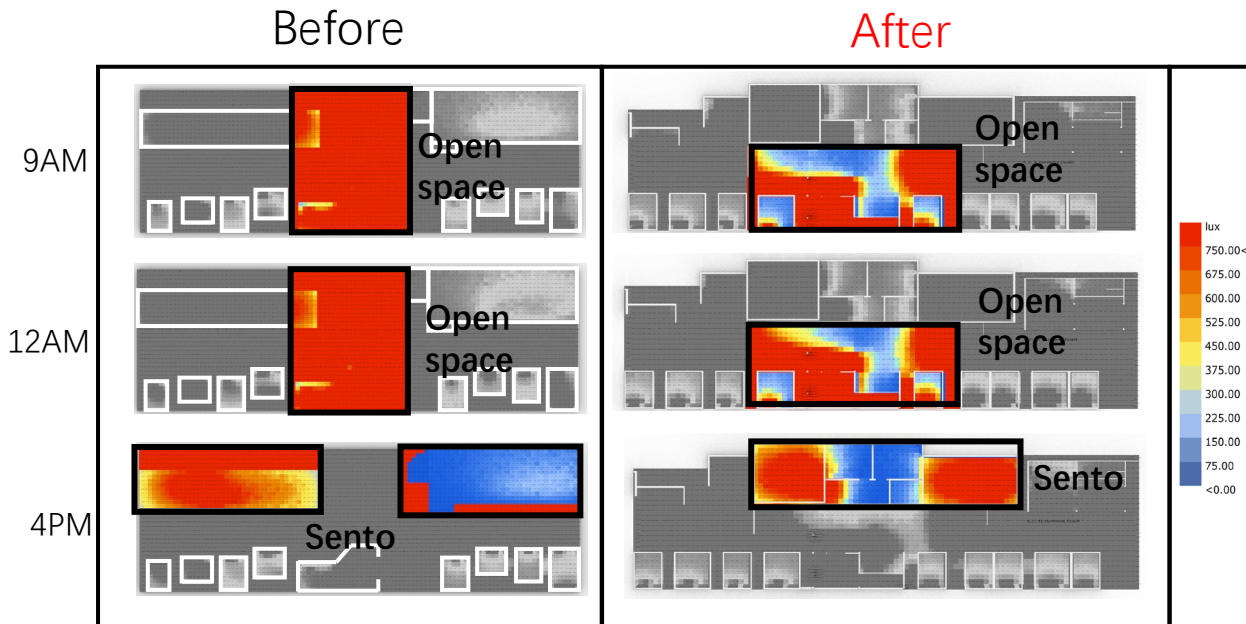
After



Proposal

In our redesign, we focused on the changes in lighting across different sections to ensure that each area receives appropriate sunlight in both winter and summer.

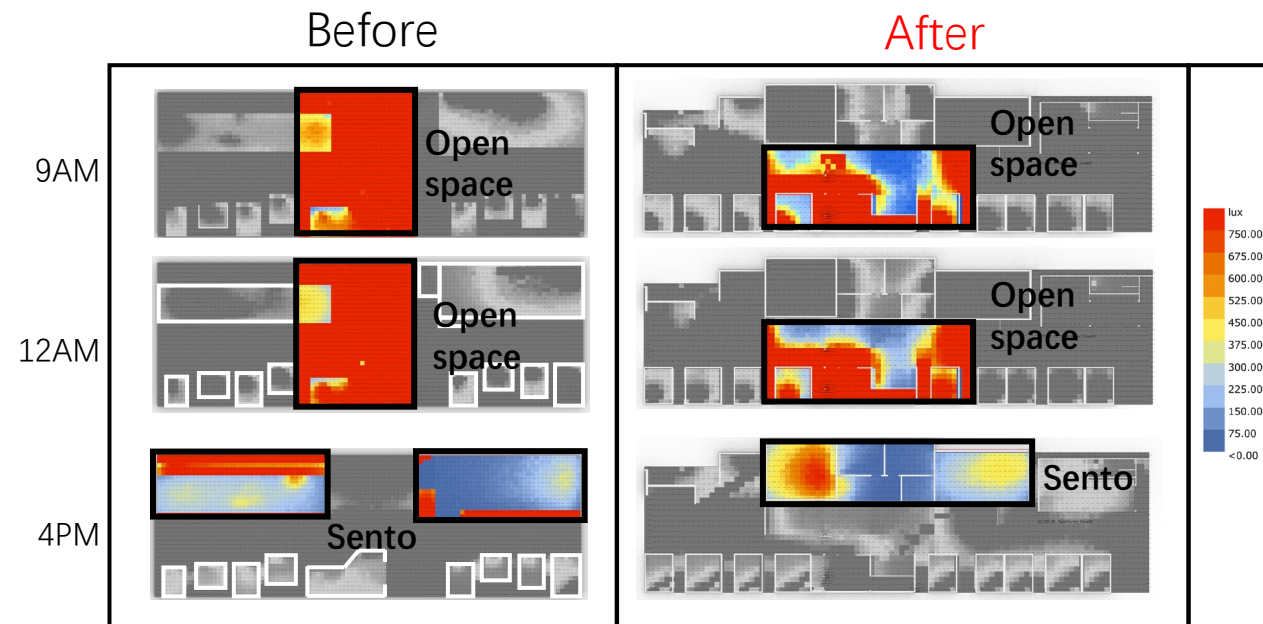
Summer solstice illumination



Improvement results

Before	After
<p>The central area of the site, designed for main activities and gatherings, is an outdoor space with consistently exceeding 750 lux. Illumination of Sento hasn't been considered.</p>	<p>We redesigned the area with a café around the Sento front desk and created a lighting gradient: the center has a relaxing 150 lux. The path to Sento starts with a 100lux changing room and leads to a brightly lit 750 lux Sento, introducing change of space through illumination.</p>

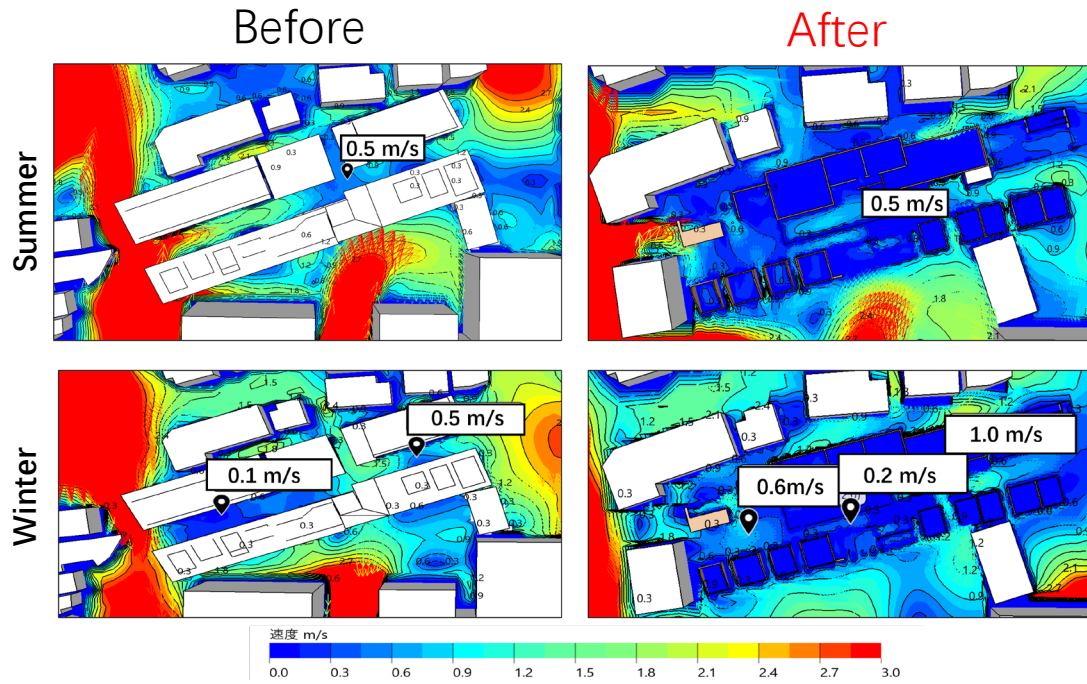
Winter solstice illumination



Improvement results

Before	After
<p>In winter, both Sentos are lit at around 300 lux. Since Okimoto-yu opens at 4pm, this lighting level isn't ideal for us; we aimed for a brighter, more lively space with >450 lux.</p>	<p>We redesigned the opening and placement of the Sento to introduce more natural light, achieving higher illumination >450 lux while keeping the changing room at a 100lux.</p>

Wind analysis



Improvement results

<p>Before</p> <p>In summer, the wind speed exceeds 0.5m/s except in open spaces, which makes people feel uncomfortable, while in winter, the wind speed in open spaces is too high.</p>	<p>After</p> <p>In summer, the wind speed is improved and controlled below 0.5m/s in most locations. In winter, the wind speed in open space is also controlled. In addition, the indoor wind speed is also controlled within a comfortable range.</p>
--	---

